



Pino Bisazza founder and President of TREND Group and Andrea Di Giuseppe, Global CEO of TREND Group

“If there were a golden rule is this: what is today will certainly not be tomorrow. We must try and imagine tomorrow, perhaps even create it. We need creativity and innovation, which are the essence of the art but also the quality on which the company must set its sights. Getting out of old thought patterns and looking at reality from viewpoints different to usual, like the artist does, is the key to being creative.”

Pino Bisazza

Founded in 2000 by **Pino Bisazza** - expert art lover and successful businessman in the mosaic sector - **TREND Group** is a manufacturer of precious materials such as glass and gold, enamels and glass agglomerates, quartz and granite, based in Vicenza, and which quickly made a name for itself as a trend-setter, able in combining the taste for tradition with a careful awareness of market changes. Its icon is a stylized cactus symbolically representing the great creativity whereby TREND is able to open a path for itself even in the most arid areas by means of solutions consisting of transparencies, iridescences and intense brightness, to personalise private areas, city environments and works of art all over the world.

The Company's mission is to be one of the world's major manufacturer's of **decorative mosaics** in glass and agglomerates, following the vision of a reality projected into the future and which wagers on innovation and simplicity to underscore its contemporary character, consistent with the most modern trends such as, for example, the growing attention for the theme of **environmental sustainability**.



The first steps taken by **TREND** in an attempt to pursue its business goals without interfering with the eco-system have taken on concrete shape in a series of major product breakthroughs which resulted in the development of the Feel mosaic and Touch agglomerate collections: the first lines to be created using recycled glass, in percentages that currently reach 78% of material from post-consumption re-use. **The Eco-Philosophy** pursued by **TREND** represents a truly ethical type of business approach: the TREND products become “green” while providing the same top quality as ever and the same performance features at the same price.

The range of eco-compatible products, created to cater for the requests of a market which is increasingly more focused on “ethical” consumption, today comprises numerous **mosaic** proposals - Liberty, Karma, Metropolis, Feel, Aureo, Vitreo, Brillante, and Shining - the **TREND Origina™** collection - and a broad range of mosaic decoration available in CAD and artistic techniques.



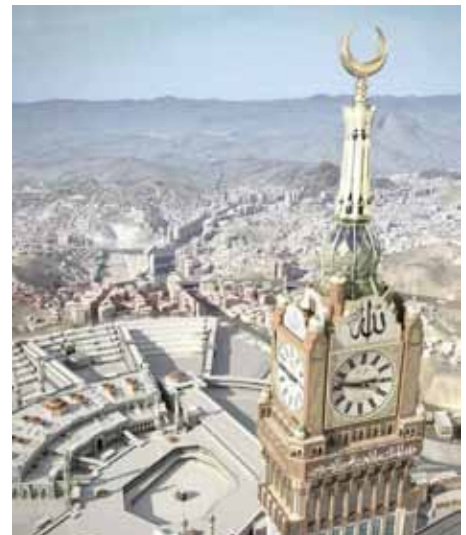
TREND's principal production facility is at Sebring (FL), the company's logistic headquarters, center of excellence for the production of TREND Origina™. It hosts an innovative workshop for the production of artistic and traditional mosaics and a highly modern Research & Development centre.

TREND's most artistic and artisan heart on the other hand finds expression in the gold-leaf mosaics and coloured enamels made in the 19th-cent. "**Angelo Orsoni**" Venetian kiln, a place of creative excellence where age-old glass-working gestures are repeated day after day.

But TREND's real headquarters are in Vicenza at **Villa alle Scalette**, a 15th-cent. building which, after careful restoration, has been transformed not only into the company's registered and administrative offices, but also into a precious instrument for communicating the brand's style and values.

Values such as the commitment which the Company has always invested in **culture**, showing itself sensitive to all types of expressions in the field of contemporary art, architecture and design: an inclination inspired in part by the personal likes of President, Pino Bisazza, who is in perfect harmony with the nature of TREND products and with the Company's position as one of the most innovative concerns on the market, as its product range goes to show, able to offer an incredibly broad selection tailored to all needs and budgets.

More specifically, TREND differs on the market in terms of its **gold mosaics** of unparalleled quality, thanks to which it has obtained important orders from abroad such as the **MECCA CLOCK TOWER**, 600 metres high and covered with 40,000 sq m of TREND glass mosaics, 14,000 sq m of which are 24-carat gold-leaf **Aureo Modern** mosaics.



With its company website and the iTREND App for iPad, TREND can also be reached online with a series of spaces far from the concept of simple "product showcase" and aimed instead at providing a series of services useful for creating a more "intimate" relationship with users and informing them about initiatives targeted at safeguarding the environment and others in the cultural field.



The complex, designed by the Dar al-Handasah Shair & Partners design studio, has a total surface area of 1,500,000 m² and is made up of seven towers split into residential units and hotels, erected on a low, 15 storey main body. It has numerous shops, two heliports and a large car-park and can host up to an estimated 100,000 guests.

An incredible amount of material was used to dress the Clock Tower: 14,000 square meters of gold mosaic, 26,000 square meters of artistic mosaic and 31,500,000 gold leaf mosaic tiles.



The clock faces are the largest in the world.

A masterpiece of engineering, the clock has been located on the top of the tower according to the wishes of the King of Saudi Arabia Abdullah Bin Abdul Aziz Al-Sand, a gift to the holy city and to the pilgrims visiting Mecca.

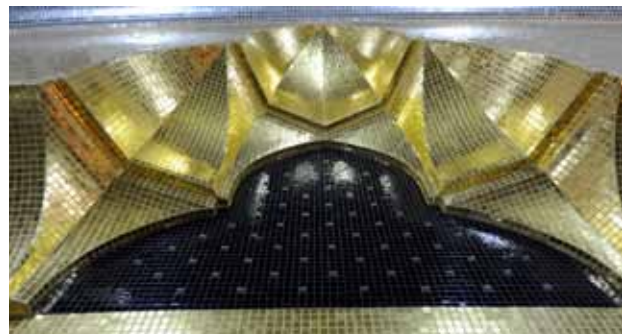
The clock is the largest in the world and is made up of four faces, two round and two oval, one for each side of the structure. Visible from a distance of 8 kilometres, it is more than five times bigger than the famous Big Ben clock face in London.

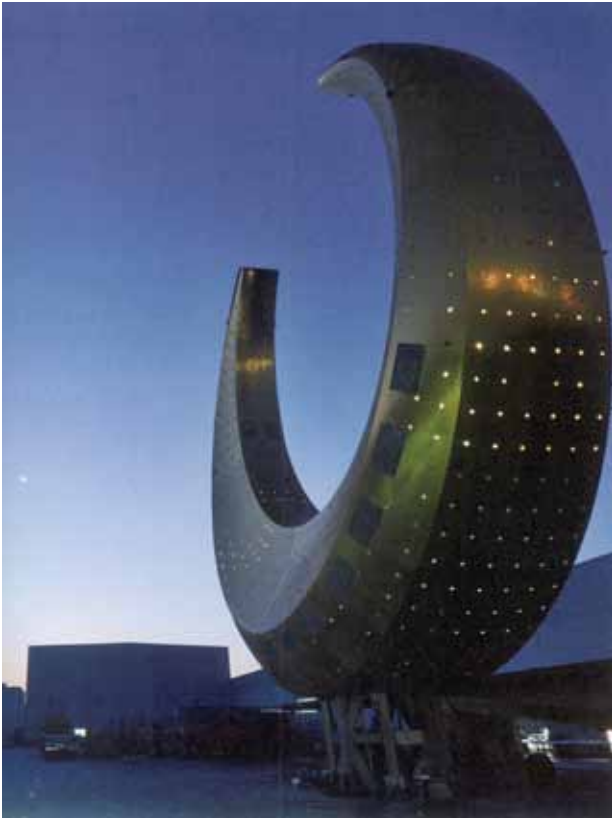




The glass and gold mosaics realized by TREND and the nineteenth century Venetian furnace at Orsoni are heirs to a tradition of artistic excellence introduced in Venice by Byzantine workers.

With the work done in Mecca, TREND has now surpassed a 1,300 year old record for the most impressive mosaic work - that of the ancient Byzantine masters at another holy site dear to Islam, the great Umayyad Mosque in Damascus (over 4,000 square meters).







TREND also took care to provide mosaic material to cover **170 gigantic “umbrellas”** (70 square meters each), placed in Medina, that are used to shelter Mecca’s pilgrims from the burning sun of the Arabian Peninsula.

Medina Railway Station



One of the largest applications of composite materials in architecture: At a speed of 320 kilometres per hour, the trains will reduce the travel time between the two holy cities of Medina and Mecca to just two hours, thus reducing the road heavy traffic during the pilgrimage period.

Al Haramain in Saudi Arabia will be the first high speed railway in the Middle East. It will connect the holy cities of Medinah, Mecca and Jeddah with the new King Abdullah Economic City.

Not only will the trains and tracks be super technologic, but the new railway will also count ultra-modern railway stations designed to allow the passengers to move in large spaces. The stations have been designed by Foster+Partners and engineered by Buro Happold.

While sharing a common planning, they will be identified by a specific colour representing the four cities. The Medina and Mecca terminals will have bright colours: Mecca will be gold since it is an holy city and with reference to the Kab'ah decorations, while Medina will be green as the Prophet's Mosque. The design, common to all stations, is inspired by the Islamic architecture, where the arch is the formal basis of the roofing, and has a sequence of 25-meter high arches that rise from the atrium, supplemented with 9-meter smaller arches at the platform level. The arches are connected to form a vaulted flexible roof. The supporting structures of the composite roofing are made of steel. Each station will be equipped with shops, restaurants, mosques, parks, helipads and VIP rooms. The public areas, included the platforms, will be air-conditioned to improve the comfort and will be illuminated by natural light filtered by the composite panels of the roofing.

Mouzhan Majidi, Foster+Partners Chief Executive, said: "The high-speed Haramain railway project constitutes a significant investment of the Saudi Kingdom within the sustainable public transport with potentially far-reaching social and economic consequences... and the design of the four new stations will symbolize this progressive approach".



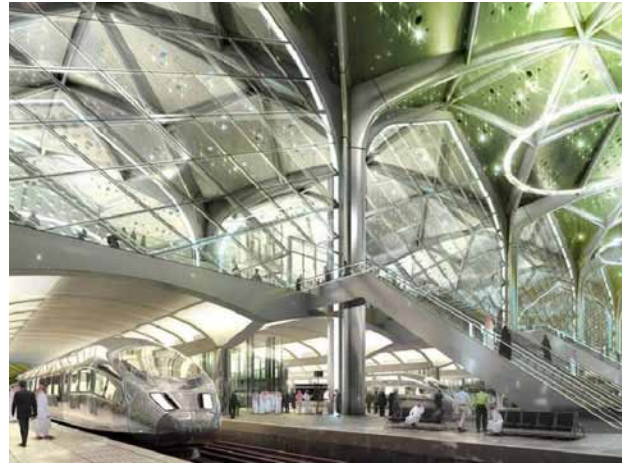
The construction

The construction works, which began in 2009, aim at opening the Jeddah-Mecca-Medina stretch in 2014. Such a short time has required the use of cutting-edge construction technologies: the Buro Happold and Foster+Partners designers adopted a modular approach for the design of the stations with a high degree of prefabrication.

The composite materials have been the obvious choice because they not only allow a significant weight saving and solutions with a great formal elegance, but they are also perfect for prefabrication.

The designers turned to PremierComposite Technologies (PCT) in Dubai to develop a series of prototypes to meet all the customer's requirements. After a careful consideration of the requests, the "turnkey" solution integrates aluminium windows frames, skylights, suspension systems for cleaning, roofing and external walkways directly into the panels. This allows a very short time of installation, directly on site. The composite materials, the technologies and the engineering for this huge project have been supplied by Gurit, a Swiss company that already collaborated with PCT for the clock tower in Mecca and on that occasion it supplied the composite materials for the roof of the Medina station.

TREND developed a custom green colour in hexagonal format, as a covering of the structure.

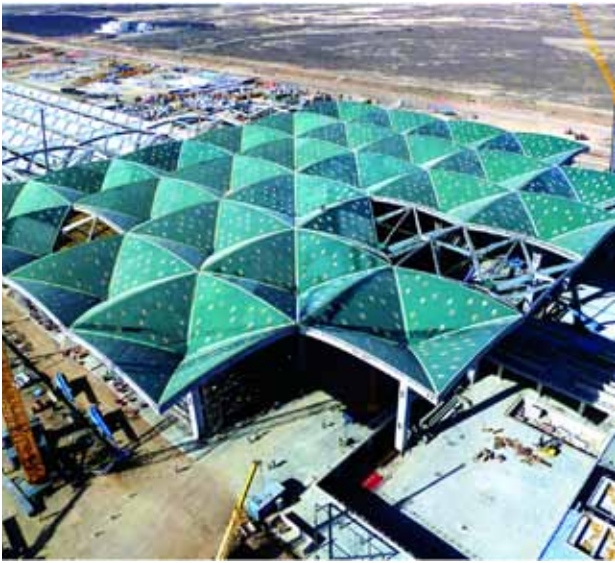


The structure

The roof includes 32 repeated modules consisting of 65 panels that together form a large 27 x 27-meter square module. These panels are assembled for a total area of 28,000 square meters of composite panels.

That is why it is one of the greatest uses of advanced composite materials within the architecture sector ever employed to date. The weight of the composite structure is only about 750 tons. Each panel must be structural, light, resistant to fire and to extreme temperatures and easy to install.

PCT provides the roof and the interior panels of the station roofing. The light panels are manufactured with moulds and advanced composite materials so that they can be easily raised, positioned and mounted. The lamination of the panels is now well under way in female moulds, after a 1:1 scale model has been successfully tested. As a matter of facts, the deformations provided by the finite element model developed by Gurit technicians and those coming from the test showed a difference of less than 2%. The production requires large quantities of Ampreg 21 FR flame retardant resin, Spabond adhesive and G-PET FR Lite™ core material.



Hexagonal tiles: Custom green colour realized by TREND Group, overall 27.000 mq.



The Louvre-Lens Museum, France



The Louvre features another expression of Italian art: TREND mosaics decorate the foyer of the Louvre-Lens Auditorium

TREND Group, a market leader in the production of mosaic, marble and decorative glass from Vicenza, has completed a highly prestigious international project: the creation and installation of mosaics for the foyer of the Auditorium at the Louvre Lens, the new concept museum that is a spin-off of the famous Musée du Louvre, and which will be inaugurated later this year in Lens- Pas de Calais, in northern France on the border with the Belgian region of Wallonia. TREND was selected to reproduce a complex floral pattern with tiny mosaic tiles (1 x 1 cm).

The pattern was specially created by a truly charismatic figure in the world of contemporary art: Yayoi Kusama. The project was a prestigious one, but also a considerable technical challenge because we were intent on bringing this Japanese designer's sketches to life in detail and with exact colour hues. The artist and designer, well-known in the luxury market for her collaborations with Lancôme, Marc Jacobs and Louis Vuitton, asked that we create special fluorescent hues and shades from scratch.

The mosaic decoration is the distinctive feature of the foyer of the Auditorium, which is a modular and multifunctional structure with a maximum capacity of 300 seats that will accommodate exhibitions, art installations, conferences and events.

The project was entrusted to our Italian company because of a number of important assets, such as the use of digital avant garde technology for building and customizing patterns, the fully in-house management of the production stage, and - last but not least - the environmental sustainability credentials that TREND mosaics has, made with a high percentage (up to 70%) of post-consumer recycled glass.



A low environmental impact, in fact, is one of the true advantages of this fascinating museum designed by SANAA in Tokyo (by architects Kazuyo Sejima and Ryue Nishizawa) in association with Parisian landscape architect Catherine Mosbach.

The Louvre Lens complex is made up of a series of two-story buildings made of glass and steel, with stark lines but with astonishing breadth and visual impact, covering a total area of 28,000 square meters, located in the middle of a large mining park of 240,000 square meters, now largely covered by greenery and foliage, serving as a memory of the mining activities which, until the '60s, represented the main source of income and employment for the Nord-Pas de Calais region.

Louvre Lens is a large and ambitious cultural project with a European feel. The new museum, in fact, carries the prestige and artistic heritage of the Louvre in a location that is easily accessible from Belgium, Germany, Holland, Denmark and the United Kingdom, for an estimated potential turnout of 500,000 visitors per year.



Secondly, the Louvre Lens will be the host of new and interdisciplinary events and exhibitions that break down the usual barriers between techniques, schools and departmental classifications, free from the systemic rigidity that has always hovered over the historic Rue de Rivoli museum.

"We are proud to have been asked to collaborate on such a prestigious International project, as we also share the same environmental sustainability philosophy" - says Federica Bisazza, Manager of Image/Communications and Projects. "For our company, it serves as further recognition for the work that we have carried out over the years with passion, skill and absolute dedication to quality."

The Sky Over Nine Columns, Venice, Italy



TREND and the Venetian tradition of golden mosaic dress with light the installation "The Sky Over Nine Columns"

As a bridge not only ideal between the contemporary conceptual art and the tradition of the local high-craftsmanship, 850.000 tesserae of golden mosaic realized by TREND decorate and dress with light the nine columns that create the installation "The Sky over Nine Columns" by the German artist Heinz Mack, placed on the church square on the Island of San Giorgio Maggiore.

The installation by Heinz Mack will be officially unveiled on Tuesday June 3rd. The columns - symmetric and over seven meters high that will remain in place bearing the sky until the end of the Venice Architecture Biennale on November 23rd - are a reflection on the concepts of clarity, power and beauty and a tribute to the city of Venice. Contributing to the realization of this artistic project, TREND confirms its commitment - accepted in 2003 by acquiring the historic Fornace Orsoni - to strengthen and spread throughout the world the fine tradition of Venetian mosaic. The golden mosaic tiles by TREND are an example of local high craftsmanship and represent the historical cultural relationships between East and West maintained by Venice.

"We are proud to represent the Venetian tradition of mosaic art in an artistic project so important." - said Riccardo Bisazza, CEO of TREND. "In this installation the visionary genius of Heinz Mack powerfully enters in relationship with the unique landscape of the lagoon, with the people and the culture of the area, uniting itself to endless stories of past, present and future through the language of art".

TREND, a manufacturer of precious materials such as glass and gold, enamels and glass agglomerates, quartz and granite, based in Vicenza, is no stranger to prestigious collaborations with the world of art and design, and to international orders that are particularly demanding. Among the works completed by TREND over the last few years, in fact, there are the decoration of the Clock Tower in La Mecca with 24-carat gold-leaf Aureo Modern mosaics and the foyer of the Auditorium of Louvre Lens, where the complex floral pattern created by the Japanese artist Yayoi Kusama has been reproduced in mosaic, providing a series of services useful for creating a more "intimate" relationship with users and informing them about initiatives targeted at safeguarding the environment and others in the cultural field.

American Airline Lounge,
Heathrow Airport, London, UK



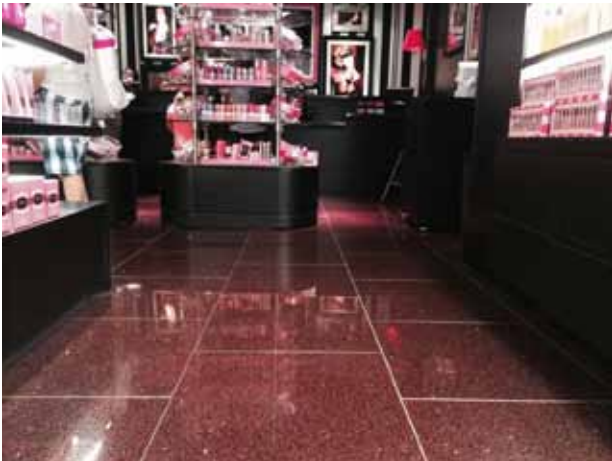
HBO Latin America Head Quarter, Miami, USA



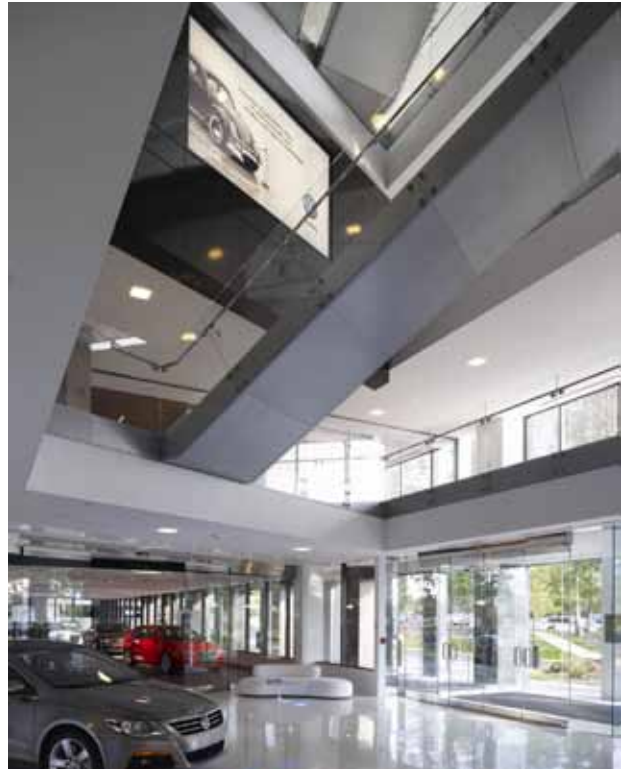
New Zealand Lounge, Sydney International Airport, Australia



Victoria Secret, 120 stores in North America and Europe



Volkswagen Head Quarters, Virginia, USA



William Jones Preparatory College High School Chicago, Illinois, USA



University of Miami, Sayfie Pavillion,
Miami, USA





HOSPITALITY

Red South Beach Hotel · Miami Beach, Florida, Usa
 Hotel De Paris · Saint-Tropez, ParisRadisson
 Mandarin Oriental Hotel · Paris, France
 Sheraton Hotel, Orlando
 Intercontinental Hotel · Davos, Switzerland
 Les Lodges Sainte-Victoire Hôtel · Aix-En-Provence, France
 Mandarin Oriental Hotel · Paris, France
 Hotel Park Hyatt Vendôme · Presidential Suite · Paris, France
 Intercontinental Hotel · Davos, Switzerland
 Big Island Resort · Kona, Hawaii, Usa
 Merville · Jesolo Lido, Venice, Italy
 Bevanda hotel · opatija, croatia
 La Praia Hotel · Zambrone, Italy
 Hotel Clevelander · Miami Beach, Florida, Usa
 Hotel Le Fleurs · Sofia, Bulgaria
 Hotel Management School · Bruneck, Bozen, Italy
 Eco-Friendly Hedonist · Casadecor '07, Miami, Florida, Usa
 Hotel Urban · Madrid, Spain
 Bulgari Hotel · Milan, Italy
 Mandarin Oriental Hotel · Munich, Germany
 Academie La Biosthétique Paris · Parkhotel Pforzheim, Hotel Germani
 Hotel Granados 83 · Barcelona, Spain
 Quality Hotel 33 · Oslo, Norway
 Hotel Management School · Bruneck, Bozen, Italy
 The Library Resort · Koh Samui Island, Thailand
 Emser Therme · Bad Ems, Germany
 Therme Meran · Meran, Italy
 Palazzo Del Mare Residence · Fisher Island · Florida, Usa
 The Romanos, A Luxury Collections Resort, Costa Navarino · Messinia, Greece
 Tauern Spa · Kaprun, Austria
 Hotel Daniel · Vienna, Austria
 Tauern Spa · Kaprun, Austria
 The Westin Resort, Costa Navarino · Messinia, Greece
 Atlantic City Hilton Atlantic City, Usa
 Hotel Campo Marzio · Vicenza, Italy
 Al Corniche Hotel Jeddah, Saudi Arabia
 Aldemar Olympia Village Skafidia, Pirgos Ilias, Greece
 Byblos Art Hotel Villa Amistà Verona, Italy
 Caribe Hilton Hotel San Juan, Portorico
 Domus Orsoni Venice, Italy
 Empire Palace Hotel Tokyo, Japan
 Four Seasons Hotel Gresham Palace Budapest, Hungary
 Hotel Arabella Sheraton Munich, Germany
 Hotel Carlton Baglioni Milan, Italy
 Hotel Centrale Cosenza, Italy

Hotel Dimaro, Val Di Sole (TN) Italy
 Hotel Genziana Ortisei, Italy
 Hotel Grand Hyatt Dubai, United Arab Emirates
 Hotel Krallerhof Leogang, Austria
 Hotel Majorana Rende (Cosenza), Italy
 Hotel Melia Barcelona, Spain
 Hotel Monte Giner Mezzana Marilleva, Val Di Sole, Italy
 Hotel Regio Manfredonia (FG), Italy
 Hotel Sheraton Four Points Spinaceto, Rome, Italy
 Hotel Sollievo Terme Montegrotto Terme (pd), Italy
 Hotel Urban Madrid, Spain
 Hotel Victor Ocean Drive, Miami Beach, Florida, Usa
 Palace Hotel Garvey Jerez De La Frontera, Cádiz, Andalusia, Spain
 Palace Hotel Ravelli Mezzana Marilleva, Val di Sole (TN), Italy
 Prigelato Village Resort Prigelato, Torino, Italy
 Virgilio Grand Hotel Sperlonga (LT), Italy



EDUCATION

William Jones College Preparatory High School · Chicago, Illinois
 Bibliotek, Marienlyst School · Oslo, Norway
 Museo Vivanco Rijoca, Spain
 National Assembly



ENTERTAINMENT COMPLEX

Emser Therme · Bad Ems, Germany



MUSEUMS

Louvre Lens Museum · Lens-Pas De Calais, France
 The Smithsonian, Postal Museum, Washington, DC
 Museo De la Cultura Del Vino Dinastia Vivanco, La Rioja, Spain



OFFICE BUILDING and CORPORATE SPACES

Volkswagen Headquarter · Virginia, Usa
 Aldo Coppola Salon · Milan, Italy
 The Lean Agency Shed · Buckinghamshire, Uk
 Dental Clinic Reception · Tokyo, Japan

PUBLIC BUILDINGS

Altare Della Patria Rome, Italy
 Amhara Martyrs Monument Bahir Dar, Ethiopia
 Canadian Opera Company Toronto, Canada
 City Hall - The Golden Hall Stockholm, Sweden

Convention Center San Juan, Puerto Rico
 Forum Assago, Milan, Italy
 Forum Les Halles Paris, France
 Georgia Aquarium Atlanta, Georgia, Usa
 Golden Buddha Wat Phikoonthong Singhabury, Thailand
 Golden Dome oman
 Golden Pagoda Bangkok, Thailand
 Katowice Cathedral Katowice, Poland
 Le Grand Bassin La Defence, Paris, France Design Agam
 Le Sacre-Coeur Paris, France
 L'opéra Paris, France
 Medhane Alem Cathedral Addis Abeba, Ethiopia
 Monasterio De Montserrat Barcelona, Spain
 Monastery Of S. Irine Athens, Greece
 "Murales in piazza", Gibellina (Sicily), Italy · 2001
 Arch. Marco Nereo Rotelli
 Nokia Theatre New York, Usa
 Amir Suite Kuwait Arch. J. Utzon
 Nunziatura Apostolica Rio De Janeiro, Brazil
 Oromiya Convention Hall Nazareht, Israel
 Pecos Monastery Pecos, New Mexico
 Regione Veneto Palace Venice, Italy
 Saint Mary Coptic Orthodox Church Cairo, Egypt
 Synagogue Essen, Germany Realiz. Wilhelm Derix, Dusseldorf
 Sydney's Skygarden Sydney, Australia
 The Detroit Institute Of Art Detroit, Michigan, Usa
 Trocadero Paris, France
 Ukrainian Cathedral North Melbourne, Australia
 Valle De Los Caidos Madrid, Spain
 Urban Forniture Soverato, Italy
 Husa Snto Domingo Plaza Oviedo, Spain
 Swissotel Hrasnye Holmy Moscow, Russia ·
 The Ritz Carlton Miami Beach, Florida, Usa



RESTAURANTS

Blue Finn Café · London, Uk
 Astoria Gaming Hall · Sottomarina Di Chioggia, Venice



RESIDENTIAL COMPLEX

Villa Alle Scalette · Vicenza, Italy
 Private House · Naples, Florida, Usa
 Private Pool · Stuttgart, Germany

Portofino Tower & Spa, Miami Beach, FL
 Posada Del León De Oro · Madrid, Spain
 Private House · Currumbin, Australia
 Atmosphere Room" by simonetta bussandri · casadecor '07 miami, florida, usa
 Private Residence · Fort Lauderdale, Florida, Usa

Arcila-Duque Furniture Interiors · Casadecor Miami, Florida, Usa
 Salone Del mobile · Milan, Italy
 Mediacom Headquarters · Middletown, Ny
 Domus Orsoni · Venezia, Italy
 Roberto Coin · Mall Of The Emirates, Dubai, United Arab Emirates
 The Sudirman Villa · Medan, Indonesia
 Private Residence · Kent, Tunbridge Wells, United Kingdom
 Condominium Lobby · Dallas, Texas, Usa
 The Turkish Bath, Sturebadet · Stockholm, Sweden
 Crown Metropol · Burswood Entertainment Complex · Burswood Wa, Australia
 Aqua · Allison Island, Miami Beach, Usa
 The Golf House · Devon, Uk
 Crown Metropol · Burswood Entertainment Complex · Burswood Wa, Australia
 Kuala Lumpur Convention Center · Malaysia
 Cascade, Sand In Taufers · Campo Tures, Südtirol, Bolzen, Italy
 Private Home · Jardines De Coyoacan, Mexico City, Mexico



RETAIL

Cultural And Community Centre · Lennox Head, Australia
 Showroom · Vicenza, Italy

Steen&Strom Department Store · Oslo, Norway



RV and CRUISESHIPS

Private Yatch · Pompano Beach, Florida, Usa
 Costa Concordia Costa Fortuna Carnival Glory



TRAIN, BUS and METRO STATIONS

Laurengasse Station · Wien, Austria
 Materdei Metro Station, Naples, Italy

Mugnano Metro Station, Naples, Italy
 Piscinola Metro Station, Naples, Italy

CHURCH

La Sagrada Familia · Barcelona, Spain
 Basilica Di San Marco Venice, Italy
 Basilica Di San Pietro Rome, Vatican State
 Saint Paul Cathedral London, Uk
 Saint Stephen's Cathedral Salzburg, Austria
 Saint Josaphat Ukrainian Cathedral Parma, Ohio, Usa
 Westminster Cathedral London, Uk



AIRPORTS

International Airport, Grand Canaries Island
 Juno Airport, Juno Alaska
 Buffalo Airport, Buffalo, NY
 Heathrow Airport, AA Lounge, London, UK
 Heathrow Airport, Victoria Secret, London, UK
 Honolulu International Airport, International Arrivals, HI
 JFK, Victoria Secret Store, NY
 Ft. Lauderdale Airport, Bathrooms, FL
 InMotion stores, Various Airports
 Toronto International Airport, Restaurant, Canada
 Schipol Airport, Souvenir Store, Amsterdam, Netherlands
 Qantas Departure Lounge, Perth, Australia
 Air New Zealand Lounge, Sydney, Australia
 Air New Zealand Lounge, Auckland, New Zealand



HEALTHCARE

Sinai Physicians Lounge
 Keswick Hall at Johns Hopkins
 Pomerado Hospital San Diego
 Kaiser Permanente Hospital, Irvine, Ca
 Kaiser Permanente Hospital, Denver
 University of Miami Sayfie Pavillion
 Incor Hospital, Sao Paulo, Brazil
 Bloedbank, Amsterdam, Netherlands
 St. Mary's Hospital, Tucson, AZ
 Memorial Navy Hospital, San Diego, CA
 Beverly Hills Surgical Center, Los Angeles, CA
 MD Anderson Hospital, Houston, TX
 Memorial Hospital, Ventura, CA
 USC Keck Medical Center, Los Angeles, CA
 Dignity West Valley, Phoenix, AZ
 Hawaii Medical Service Association, Honolulu, HI
 Dr. Mark Amron Plastic Surgery, Beverly Hills, Ca
 Central DuPage Hospital, Winfield, IL
 Access Community Health, Chicago, IL



HOSPITALITY

W hotel Hollywood, CA
 W hotel Atlanta, GA
 Radisson Blue, Hamburg, Germany
 Sheraton Hotel, Orlando
 Murano Hotel, Tacoma WA
 Maxwell Hotel, Seattle
 The Plaza Hotel (Hyatt), Albuquerque NM
 Hard Rock Cafe' Hotel, Cancun, Mexico
 RED Hotel, Miami Beach, FL

Doubletree Hotel, Sunny Isle Beach, FL
 Isla Margarita Hotel and Spa, Isla Margarita, Venezuela
 Marenas Resort, Sunny Isle Beach, FL
 Radisson Blue, Oslo, Norway
 Hotel Husa Santo Domingo Plaza, Oviedo, Spain
 Hotel La Hacienda, Fribourg, Switzerland
 Ski Resort, Chamonix, France
 Grand Hotel Pupp, Karlovy Vary, Czech Republic
 Hotel Ole Bulls, Bergen, Norway
 Hotel Van der Valk, Netherlands
 Hotel 71, Chicago, IL
 Holiday Inn, Littleton, CO
 Remington Hotel, Key West, FL
 Book Cadillac Hotel, Detroit, MI



EDUCATION

Francis Scott Key Middle School / Elementary
 University of Florida, Gainesville
 University of Georgia
 William Jones College, Chicago
 Montgomery County College, PA
 Wheatley School, DC
 Truman College, Chicago, IL
 Tyler School, DC
 Janney Elementary, DC
 Ann Beers Elementary, DC
 FIU, Miami FL
 Chapman University, Orange, CA
 UCLA, CA
 Ludlow Elementary School, VT
 Amidon-Bowen Elementary, DC
 Caltech, Pasadena, CA
 Peabody Early Childhood Education, Pittsburg, PA
 ASU, Phoenix AZ
 UM, Ibis President House, Miami, FL
 Law Faculty College, University of Copenhagen, Denmark
 Pico Rivera Library, Pico Rivera, CA
 School of Mines, Colorado
 Denver City Sport Complex, Denver City, TX
 Hoover Middle School, Waterloo, IA
 Catherine Cook School, Chicago, IL
 Texas A&M, Sport Complex, College Station, TX
 University of Michigan, Ann Arbor, MI
 Eastern Michigan University, Ypsilanti, MI
 Eastern Michigan University, Eagle Crest Gold Course, MI



ENTERTAINMENT COMPLEX

Cineplex, Sofia, Bulgaria
Cineplex, Barbados

Cineplex, Toronto I
Cineplex, Toronto II
Citizen Kofi Entertainment Complex, Accra, Ghana
Perth Stadium, Perth Australia
Reveal Casino, NJ
Rama Casino, Ontario, Canada
Legoland, Germany
Toves Gallery, Denmark
Olympic Casino Klaipėda, Vilnius, Lithuania
Commercial Center Alie Parusa, Moscow, Russia
Star City Casino, Sydney, Australia
Greater Union Cinema, Sydney, Australia
Ka Makana 8 Plex Theater, Honolulu, HI
Foxwoods Casino, Ledyard, CT
Emagine Movie Theaters in Novi, Rochester, Royal Oak, Woodhaven and Macomb, MI



MUSEUMS

Georgia Museum of Art, GA
The Smithsonian, Postal Museum, Washington, DC

Museo De la Cultura Del Vino Dinastia Vivanco, La Rioja, Spain



OFFICE BUILDING and CORPORATE SPACES

Red Hat office building, VA
ANZ building, Melbourne Australia

Two Park Crest
HBO Latin America, Miami
SEC office, Atlanta
Sec office, San Francisco
Porsche Dealer, Toronto
Maritime headquarters, Ft Lauderdale, FL
600 E Street Building, Washington, DC
NFL, NYC
VW Headquarters, VA
Knott Realty
OLD NAVY, San Francisco
New York Mortgage Bank, San Juan Puerto Rico
Bank of Stockton, Stockton CA
Ponce De Leon Bank, NYC
Phillip Morris, VA

Atlantic Council
Legg Mason Tower, Deutsche Bank
Legg Mason Tower, Level 22,
Arent Fox
Washington Square Office Suites
Chemistry Council
Red Hat
UMPB
Digital Reality, Dallas, TX
350 Wachovia bank branches, now Wells Fargo
Roadnet
CoStar Group
Neustar Inc.
5550 Friendship Blvd, MD
1555 Wilson Blvd, Arlington, VA
Williams & Connolly LLP, Washington, DC
Knott Realty Group, MD
Hertz, Sydney, Australia
Sogebank, Port Au Prince, Haiti
Bocci Lighting, Vancouver, Canada
Citibank, Toronto, Canada
Washington Square office building, DC
Deutsche Bank, Frankfurt, Germany
La Bioesthetique, Pforzheim, Germany
Uniqa Versicherungen, Wein, Austria
Cromwell Project, Brisbane, Australia
ANZ corporate Headquarters, Melbourne, Australia
Ambit, Sydney, Australia
Smith Madden Architects, Sydney, Australia
Arnotts Bakehouse, Homebush Sydney, Australia
Canberra Center, Canberra, Australia
Castlereagh St, Sydney, Australia
Northpoint Office Tower, Sydney, Australia
Colliers International, Sydney, Australia
Miele Headquarters, Melbourne, Australia
McGrath and Partners, Sydney, Australia
Next Generation Leisure Center, Perth, Australia
Watson Wyatt, Sydney, Australia
Westfield (Burwood), Sydney, Australia
Australian Guide Dogs, Sydney, Australia
Time Life Headquarter, Sydney, Australia
Investar, Dallas, TX
AIG conference Center, TX
Parsley Energy, Austin, TX
Ford Car Dealership, Nationwide US
DRI, Dallas, TX
Carbon County, Price, Utah
Wells Fargo Bank, Chicago IL
Bodman PLC Law, Detroit, MI
Williams International (Gov. Missile Manufacturer), Walled Lake, MI



RESTAURANTS

Steak House, City Center, Las Vegas
 Rosa Mexicana, Atlanta
 Rosa Mexicana, New York

LeBon, Miami Beach
 American Tap Room
 Stake and Shake
 YoYo Frozen Yogurt
 Segafredo L'originale, Miami Beach, FL
 Spris, Miami Beach, FL
 Spris, Downtonw, Miami
 Spris, Midtown, Miami
 Benihana, various restaurants around the US.
 Chicken Kitchen, Miami Beach, FL
 Chicken Kitchen, Coral Gables, FL
 Harbor Sixty Steakhouse, Toronto, Canada
 Castle Hill Tavern, Sydney, Australia
 Doyles Restaurant, Sydney, Australia
 Hellenic Club, Canberra, Australia
 Pittwater RSL, Sydney, Australia
 Television Café JOJ, Bratislava, Slovakia
 Bosco Bar, Moscow, Russia
 Blue Sushi Sake Grill, Centennial, CO
 Peacock Diner, St. Louis, MO
 Rice Bowl Sushi, Chico, Ca
 DDS Restaurant, London, UK
 Benihana Restaurant, Troy, MI
 Mr. B's Bar, Royal Oak, MI
 Steve and Rocky's Restaurant, Novi, MI



RETAIL

110 Victoria Secret Stores
 Nintento, NYC
 FAO SHWARZ, NYC

Longoni Sport, Milan, Italy
 Carter's Photo Studio
 Blackberry stores
 Toys are Us, NYC
 Les Schwab Tires Stores, Oregon, California, Washington State.
 Beverly Center, Los Angeles, CA
 Bloomingdale, West Palm Beach, FL
 Longchamp, Barbados
 Longchamp, Costa Mesa, CA
 Longcham, Mexico City
 Longchamp, St. Martin.
 Mouawad Jewelry, Jeddah, Soudi Arabia
 Mouawad Jewerly, Kuwait City, Kuwait
 Tashen, Toronto, Canada
 Oroton, Sydney, Australia
 Les Domaines Agricoles Hay Riad, Marocco
 Food Court, Commercial Center, Tirana, Albania
 BIPA, Austria
 Neiman and Marcus, Los Angeles, CA
 On The Border, Nationwide USA
 Natural Grocers, By Vitamin Cottage, Wheat Ridge, CO
 Two Rivers Coffee, Aevada, CO
 Chop Shop, California



RESIDENTIAL COMPLEX

The Asher, Alexandria, VA
 Highland Park, IL
 Costa Brava, Miami Beach, FL

Portofino Tower & Spa, Miami Beach, FL
 Two Park Crest, VA
 Frank Lloyd Wright, Private Residence, Lakeland FL
 Vendome, condominium, Miami Beach
 Liberty Posh Condos, Toronto, Canada
 Merchandise Lofts, Mississauga, Canada
 Roman Abramovic, Private Residence, Moscow, Russia
 Sterling Moss, Private Residence, London, UK
 Wilshire La Brea Apartment Complex, Los Angeles, CA
 Escape at Ken Caryl, Club House, Houston, TX
 Deer Valley, 344, Phoenix AZ
 CWS apartments, Broomfield, CO
 Riverfront Apartments, Detroit, MI



RV and CRUISESHIPS

Newmar Corporation, RVs

Costa Fortuna

Carnival Glory

Carnival Miracle

Carnival Liberty

Carnival Freedom

Carnival Magic

Carnival Conquest

Carnival Elation

Holland America, remodeling of 17 of their Cruise Ships

MSC Fantasia

Aida

Seaforce Flamingo Daze

Diamond Queen II

Tangerine Queen

Kingfisher

Oceania Regatta

Oceania Insigna

Oceania Nautica

Primetime

Cary On



TRAIN, BUS and METRO STATIONS

Union Station Terminal, Dallas, TX

Main Train Station, Amsterdam, Netherlands

City Terminal, Ticket Office, Stockholm, Sweden



Trend USA Ltd.
MEMBER SINCE 2006



Children & Schools
Indoor Air Quality Certified



NSF Certified